



A190  
A196

SAFETY  
LUMINAIRES

**TAKTON**

# DCW097 12-24 VDC



## BENEFITS:



- Stylish design, made for LED
- Reliable LED technology - maintenance-free
- Direct replacement for conventional waterproof luminaires in terms of light performance, installation flexibility and length
- 12-24V DC input let use these luminaires with sun panels and accumulator with 12-24V DC

## PRODUCT INFORMATION

### TYPE

**PRODUCT TYPE:**  
DCW 097

### FUNCTIONALITY

**DRIVER:**  
Driver MeanWell included

**INITIAL LED LUMINAIRE EFFICACY:**  
115 Lm/W

**OPTICAL COVER:**  
Injection molded acrylic (PMMA). As option injection molded polycarbonate (PC)

**LIGHT COLOR:**  
4000 K as a standard

**COLOR RENDERING INDEX (CRI):**  
> 80

**LIGHT OUTPUT RANGE, LM:**  
1500, 3000 lm depending on type

**OPTICAL TYPES:**  
Wide. 120 dgr light distribution

**POWER SUPPLY:**  
Driver MeanWell

**LIGHT SOURCE:**  
LED module with OSRAM led chips

## ELECTRICAL PARAMETERS

**DRIVER EFFICIENCY NOMINAL:**  
up to 0.92

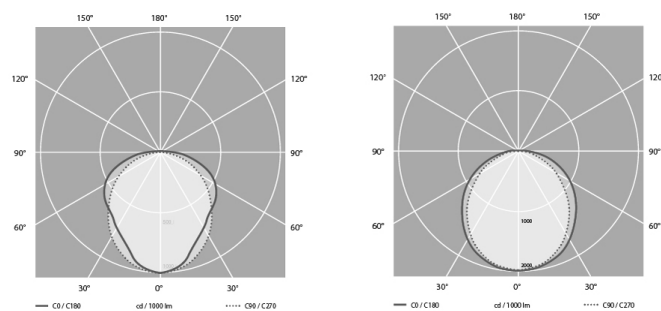
**INPUT FREQUENCY:**  
n/a

**ELECTRICAL ISOLATION CLASS IEC:**  
Class II

**POWER FACTOR NOMINAL:**  
n/a

**INPUT VOLTAGE:**  
12/24 VDC

**POWER CONSUMPTION:**  
13,26 W depending on type



Light distribution

## MECHANICAL PARAMETERS

**INGRESS PROTECTION:**  
IP66

**BODY MATERIAL:**  
Flame retardant glass-fibre reinforced polyester

**IMPACT RESISTANCE:**  
IK05, IK10 as option

**NET WEIGHT PIECE:**  
1,3 kg

**INSTALLATION:**  
on surface

## OVERTIME PERFORMANCE

**DRIVER SERVICE LIFE TIME @10% FAILURES:**  
50 000 h

**LUMINOUS FLUX SYSTEM TOLERANCE:**  
+/- 7%

**INITIAL SYSTEM EFFICACY:**  
115 Lm/W

**MEDIAN USEFUL LIFE OF LED SOURCE:**  
L80B20, 50 000 Hours

**POWER CONSUMPTION TOLERANCE:**  
+/- 7%

## ENVIROMENTAL CONDITIONS

**AMBIENT TEMPERATURE RANGE:**

-20 +35 C°

**AVERAGE AMBIENT TEMPERATURE:**

n/a

## GENERAL INFORMATION

**FLAMMABILITY:**

Not fire resistant

**CE MARK:**

CE mark

**ROHS MARK:**

ROHS mark

**APPLICATION:**

- Parking garages
- Warehouses
- General lighting

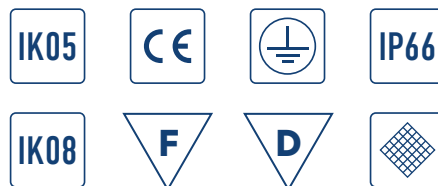
## PRODUCT FAMILY RANGE

Code	Name	Light output lm	Power consupcion W	Efficacy m/W	Length mm
700151251045	DCW097-120 3000lm 26W 840 I OP IP66 12/24V DC	3000	26	115	1185
700151251045	DCW097-120 1500lm 13W 840 I OP IP66 12/24V DC	1500	13	115	1185

# DCW097-120 110VDC



## BENEFITS:



- Stylish design, made for LED
- Reliable LED technology - maintenance-free
- Direct replacement for conventional waterproof luminaires in terms of light performance, installation flexibility and length

## PRODUCT INFORMATION

### TYPE

PRODUCT TYPE:  
DCW 097

### FUNCTIONALITY

INITIAL LED LUMINAIRE  
LM OUTPUT 3600LM

OPTICAL COVER:  
Injection molded acrylic (PMMA). As option injection molded polycarbonate (PC)

COLOR RENDERING INDEX (CRI):  
> 80

POWER SUPPLY:  
Takton DC LED driver

LIGHT SOURCE:  
LED module with OSRAM led chips

## ELECTRICAL PARAMETERS

**DRIVER EFFICIENCY NOMINAL:**  
0.91

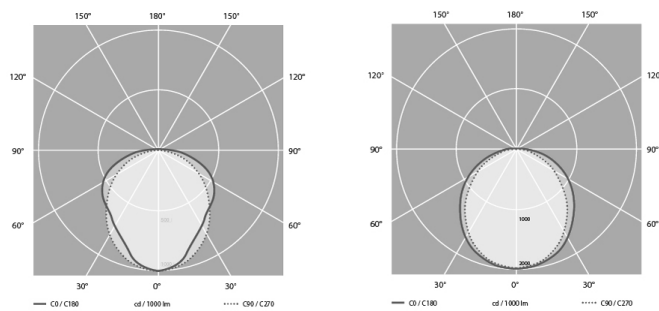
**INPUT FREQUENCY:**  
50-60 Hz

**ELECTRICAL ISOLATION CLASS IEC:**  
Class I as a standard, Class II on request

**POWER FACTOR NOMINAL:**  
0,95

**INPUT VOLTAGE:**  
110VDC

**POWER CONSUMPTION:**  
32 W



Light distribution

## MECHANICAL PARAMETERS

**INGRESS PROTECTION:**  
IP66

**INSTALLATION:**  
on surface

**IMPACT RESISTANCE:**  
IK05, IK10 as option

**BODY MATERIAL:**  
Flame retardant glass-fibre reinforced polyester

## OVERTIME PERFORMANCE

**DRIVER SERVICE LIFE TIME @10% FAILURES:**  
50 000 h

**LUMINOUS FLUX SYSTEM TOLERANCE:**  
+/- 5%

**INITIAL SYSTEM EFFICACY:**  
112 Lm/W

**MEDIAN USEFUL LIFE OF LED SOURCE:**  
L80B20, 50 000 Hours

**POWER CONSUMPTION TOLERANCE:**  
+/- 5%

## ENVIROMENTAL CONDITIONS

**AMBIENT TEMPERATURE RANGE:**  
-20 +35 C°

## GENERAL INFORMATION

**FLAMMABILITY:**  
Not fire resistant

**CE MARK:**  
CE mark

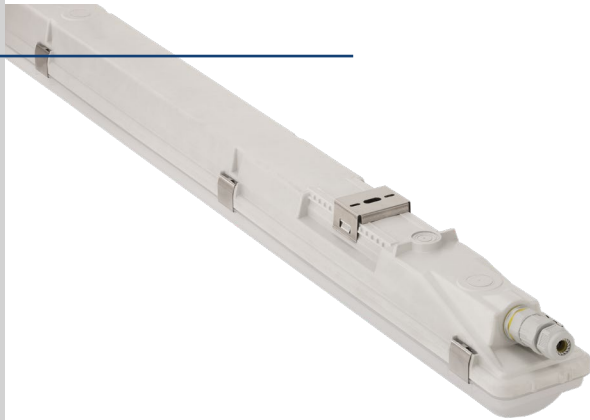
**ROHS MARK:**  
ROHS mark

**APPLICATION:**  
Electro Power substations With 330VDC current sources  
Emergency lighting for central batteries 220VDC output

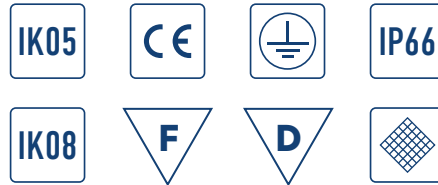
## PRODUCT FAMILY RANGE

Code	Name	Light output lm	Power consumption W	Efficacy m/W	Length mm
700151252524	DCW097-120 3600lm 32W I 840 IP66 PMMA 110VDC FC	3600	32	113	1185

# DCW097 230VAC/220VDC



## BENEFITS:



- Stylish design, made for LED
- Reliable LED technology - maintenance-free
- Direct replacement for conventional waterproof luminaires in terms of light performance, installation flexibility and length

## PRODUCT INFORMATION

### TYPE

PRODUCT TYPE:  
DCW 097

### FUNCTIONALITY

INITIAL LED LUMINAIRE LM OUTPUT  
2500-11500LM DEPENDS ON TYPE

OPTICAL COVER:  
Injection molded acrylic (PMMA). As option injection molded polycarbonate (PC)

COLOR RENDERING INDEX (CRI):  
> 80

POWER SUPPLY:  
Philips xitanium driver

LIGHT SOURCE:  
LED module with Samsung led chips



## ELECTRICAL PARAMETERS

**DRIVER EFFICIENCY NOMINAL:**  
0.91

**ELECTRICAL ISOLATION CLASS IEC:**  
Class I as a standard, Class II on request

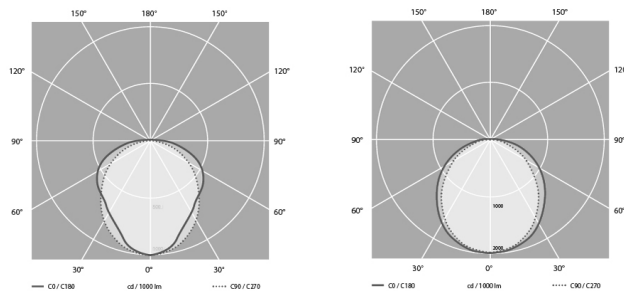
**INPUT VOLTAGE AC RANGE:**  
198-264 V

**INPUT VOLTAGE DC RANGE:**  
168-275 V

**INPUT FREQUENCY:**  
50-60 Hz

**POWER FACTOR NOMINAL:**  
0,95

**POWER CONSUMPTION:**  
16-74 W Depends on type



## MECHANICAL PARAMETERS

**INGRESS PROTECTION:**  
IP66

**IMPACT RESISTANCE:**  
IK05, IK08 as option

**INSTALLATION:**  
on surface

**BODY MATERIAL:**  
Flame retardant glass-fibre reinforced polyester

## OVERTIME PERFORMANCE

**DRIVER SERVICE LIFE TIME @10% FAILURES:**  
100 000 h@ 65 grad C Tc point

**INITIAL SYSTEM EFFICACY:**  
Up to 170 Lm/W

**LUMINOUS FLUX SYSTEM TOLERANCE:**  
+/- 5%

**MEDIAN USEFUL LIFE OF LED SOURCE:**  
L80B20, 50 000 Hours

**POWER CONSUMPTION TOLERANCE:**  
+/- 5%

## ENVIROMENTAL CONDITIONS

**AMBIENT TEMPERATURE RANGE:**

-20 +35 C°

## GENERAL INFORMATION

**FLAMMABILITY:**

Not fire resistant

**ROHS MARK:**

ROHS mark

**CE MARK:**

CE mark

**APPLICATION:**Electro Power substations With 330VDC current sources  
Emergency lighting for central batteries 220VDC output

## PRODUCT FAMILY RANGE

Code	Name	Light output lm	Power consumption W	Efficacy m/W	Length mm
700151252135	DCW097-120 2500LM 16W 840 I IP66 PMMA 230VAC/220VDC	2,500	16	156	1185
700151251134	DCW097-120 4550LM 29W I 840 IP66 PMMA 230VAC/220VDC	4,550	29	157	1185
700151251160	DCW097-120 8000LM 49W 840 I IP66 PMMA 230VAC/220DDC	8,000	49	163	1185
700151251133	DCW097-150 11500LM 74W 840 I IP66 PMMA 230VAC/220VDC	11,500	74	155	1477
700151251136	DCW097-150 5000lm 28W I 840 IP66 PMMA 230VAC/220VDC	5,000	28	179	1477

# **TAKTON**

SAVI 7, PÄRNU 80041, ESTONIA  
+372 534 25323 / INFO@TAKTON.EE

**WWW.TAKTON.EE**